

Cleveland County Cattlemen's Association

**6th Annual
REPLACEMENT HEIFER SALE**



**Saturday, March 3, 2012
12:00 Noon**

**Shelby Livestock Yard
Shelby, NC
(704) 487-4023**

- lunch will be available -

Selling 65 head of high quality heifers - a good mix of registered, purebred & commercial females sired by Angus, Simmental-Angus, Limousin & Shorthorn bulls. Open & bred heifers are available, one with a heifer calf at side.

*All heifers are quality screened, palpated and guaranteed.
Complete vaccination program.*

Contacts:

**Greg Traywick (704-482-4365)
Wayne Yarbro (704-739-2123)**



Offering industry-leading solutions that perform for all beef producers.

Beef producers, veterinarians & nutritionists across the country count on the industry-leading products and experienced staff from Pfizer Animal Health to help them provide a safe, sustainable global food supply.

Antimicrobials

Calf Scours Vaccines & Treatment Products

Clostridial Vaccines

Genetics Testing

Growth Enhancers

Mastitis Prevention & Treatment Products

Parasiticides

Reproductive Management Products

Respiratory-Reproductive Vaccines

Contact Your Pfizer Animal Health Representative Today:

Noel Torres - Huntersville, NC

noel.torres@pfizer.com

Cell: 980-253-3224

Consignors

Jim & Alan Barlowe (Bar M Farms)

4316 Greenfield Place, Boomer, NC 28606
(828) 493-2266

Arlan Bush (Hat Creek Cattle Co.)

3225 Frank Grigg Drive, Shelby, NC 28150
(704) 487-4798

Mike Clark (Clark Farms)

544 Dusty Farm Road, Cherryville, NC 28021-9030
(704) 445-4626, (704) 813-2833

Dean Crocker (C-Rock-R Farm)

1009 St. Mark Church Road, Cherryville, NC 28021
(704) 435-2801

Mike Davis (Davis Farms)

7436 Reep's Grove Church Road, Vale, NC 28168
(980) 241-0750

Hal Hendrick (Plainfield Angus)

3581 Plainfield Drive, Shelby, NC 28150
(704) 487-5746

Zack Lowman (R&M Farns, Inc.)

2010 Smyre Farm Road, Newton, NC 28658
(828) 310-5374

Robert Rhyne (Rhyneland Farms)

3700 Peach Orchard Road, Charlotte, NC 28215
(704) 545-3253 or (704) 614-0826

William E. Seitz, Jr.

1967 Smyre Farm Road, Newton, NC 28658

Robert Smyre (R&M Farms, Inc.)

1968 Smyre Farm Road, Newton, NC 28658
(828) 464-0795

David White (White Farm)

198 White Farm Road, Dallas, NC 28034-8531
(704) 922-1838 or (704) 913-5157

Joyce & T.W. Wall (Highlands Farm)

4298 Seitz Road, Morganton, NC 28655
(828) 413-4582

About this Sale...

The Replacement Heifer Sale is sponsored annually by the Cleveland County Cattlemen's Association in an effort to provide a market for top quality replacement heifers. These rules govern our 2012 sale:

1. Consignors must be members of Cleveland Co Cattlemen's Association.
2. Sales of the following are permitted: quality open heifers, bred heifers, first calf cow/calf pairs, and bulls.
3. Commercial or purebred heifers may be consigned.. Heifers sold as purebred must be accompanied by registration papers.
4. Heifers must weigh a minimum of 700 pounds on sale day.
5. Bulls must be registered with a complete set of EPDs and must be less than 2 years of age on sale day.
6. All animals must pass an on-farm quality screen prior to acceptance. Consigned animals must be identified and contained in a small pen or corral to facilitate visual inspection and photographing.
7. All bulls must pass a breeding soundness exam (to be administered at the sale facility) and be guaranteed breeders.
8. Heifers will be palpated at the sale facility to determine pregnancy status and will be sold in accordance with palpation results. Sellers guarantee all heifers to breed provided they are fed and managed properly.
9. Heifers and bulls will be fully vaccinated with CattleMaster® Gold FP5L5 and Ultrabac 7. Initial injections are to be administered at the farm according to schedule. Boosters will be administered at the sale facility.
10. Advertising fees will be divided among consignors on a per head basis.
11. Consignors agree to pay actual cost of vaccines, ear tags, palpation, and breeding soundness exams.
12. Consignors must provide, at minimum, actual birth dates and sire breed information on each heifer consigned. Additional data, when available, will be included in the sale catalog. Consignment deadline is February 10.
13. Heifers and bulls will be evaluated by independent grader and the sale order will be determined accordingly.
14. A \$25/head consignment fee (check payable to CCCA) must be returned with your application. At the completion of the sale, this deposit will be applied to your total sale expenses (advertising, supplies, veterinary charges). If you consign an animal that fails to pass the quality screening, the deposit for that animal will be refunded. Otherwise, this deposit is non-refundable.

Buyer's Guarantee...

Heifers advertised and sold as open are guaranteed open and are guaranteed to breed if fed and managed properly. Bred heifers are guaranteed safe in calf. Consignors will refund purchase price of any animal failing to meet these conditions upon receiving a signed statement by a practicing veterinarian. This statement should define the nature of the reproductive problem as well as a factual assessment of the husbandry practices provided by the buyer to assure the health and well-being of cattle following their purchase.

About our Association...

Notes:

Our Organization

Cleveland County Cattlemen's Association is a tax-exempt educational organization that works to promote the beef industry in and around Cleveland County. Persons or firms interested in the production, marketing, or consumption of beef are eligible to join. Membership is \$10 annually.

Our Mission

The mission of CCCA is to support and strengthen the local beef industry by educating our members on various aspects of beef cattle management. We also seek to support those youth who will be providing leadership to the beef industry in the future through our Youth Scholarship Program.

Member Benefits

Association members benefit from their participation in a number of Association-sponsored activities and events held throughout the year. These include:

- Area Cattlemen's Conference
- Educational workshops and field days
- Replacement Heifer Sale
- Summer Tour
- Use of Association-owned handling equipment

For more information, visit us online at www.clevelandcattlemen.com.



Jim & Alan Barlowe (Bar M Farms)

Jim and Alan Barlowe consign eighteen (18) tremendous Angus-sired open commercial heifers to this year's sale. These yearling females are extremely uniform and well-developed, and would compliment any commercial beef cattle enterprise.



Three (3) of the heifers are straight Angus, and fifteen (15) are Angus-sired females out of highly-productive Santa Gertrudis dams. Their sires include New Design, Neutron, and Basin Franchise blood-lines.

Sale Tag	Farm Tag	Birth Date	Breed	Sire	Palpation Results	Sale Day Weight
1	16	01-03-11	Angus	New Design	Open	
2	100	01-05-11	Angus	New Design	Open	
3	141	12-20-10	Angus	New Design	Open	
4	111B	01-25-11	Gert x Angus	Basin Franchise	Open	
5	1523	01-02-11	Gert x Angus	Neutron	Open	
6	1549	02-17-11	Gert x Angus	Neutron	Open	
7	1589	02-05-11	Gert x Angus	Neutron	Open	
8	188	01-11-11	Gert x Angus	Neutron	Open	
9	142	02-27-11	Gert x Angus	Neutron	Open	
10	1598	02-14-11	Gert x Angus	Basin Franchise	Open	
11	1106	12-24-10	Gert x Angus	Neutron	Open	
12	1575	02-08-11	Gert x Angus	Neutron	Open	
13	114	03-19-11	Gert x Angus	New Design	Open	
14	116	02-07-11	Gert x Angus	Neutron	Open	
15	155	02-16-11	Gert x Angus	Basin Franchise	Open	
16	1129	12-22-10	Gert x Angus	Neutron	Open	
17	1922	02-07-11	Gert x Angus	New Design	Open	
18	191	03-08-11	Gert x Angus	Neutron	Open	

Bar-M Farms, continued.

Reference Sire Information:

Basin Franchise 7609 (AAA 15890307)

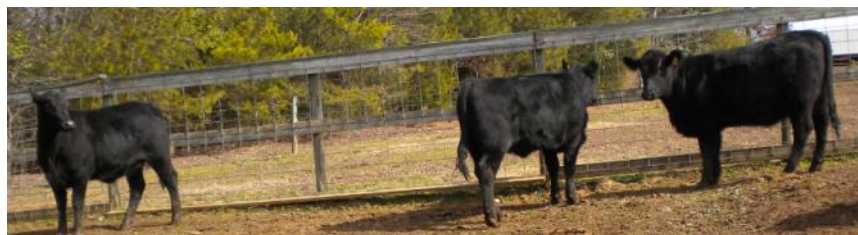
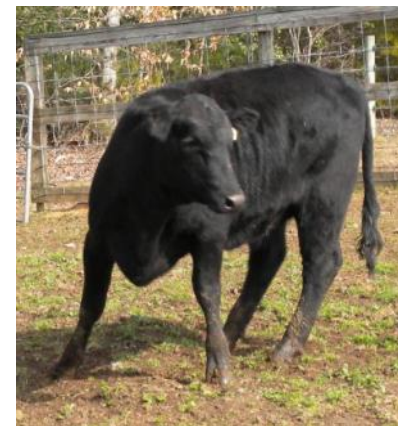
As of 02/17/2012

Production								Maternal						
CED Acc	BW Acc	WW Acc	YW Acc	RAD G Acc	YH Acc	SC Acc	Doc Acc	HP Acc	CEM Acc	Milk Acc	MkH	MW Acc	MH Acc	\$EN
+6	+2.8	+43	+93		+2	+1.15			+10	+26				-9.41
.30	.37	.28	.28		.37	.36			.17	.21				

Carcass						
CW Acc	Marb Acc	RE Acc	Fat Acc	Carc Grp	Usnd Grp	
				Carc Pg	Usnd Pg	
+19	+64	+31	+024			
.19	.23	.25	.21			

Neutron sires include the following high-performance bulls bred by Bruce Shankle of Polkton, NC and Parks Helms of Monroe, NC:

1. EBS Neutron 377-523 (AAA 15040127)
2. EBS Neutron 377-541 (AAA 15040145)
3. WPH Neutron PO2 (AAA 15093683)



Arlan Bush (Hat Creek Cattle Co.)

Arlan Bush consigns six (6) proven young cows to this year's sale. These commercial Angus x Hereford baldy females are big & broody and have already weaned their first calf. All six are 5-6 month pregnant, having been pasture exposed to **Sarratts Final Answer 9622**, a purebred Angus bull purchased at the 2010 Sarratt Farms Bull Sale in Gaffney, SC.



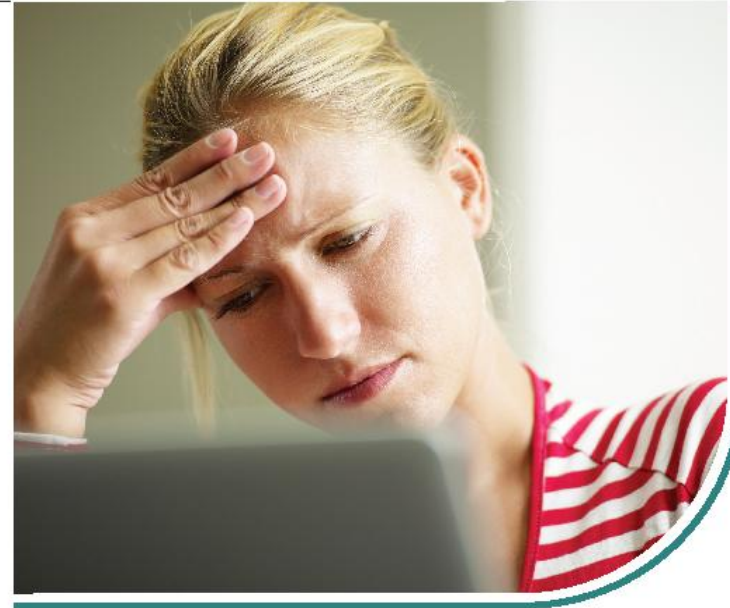
Sale Tag	Farm Tag	Birth Date	Breed	Palpation Results	Sale Day Weight
19	109	Oct '09	Angus x Hereford	Bred	
20	409	Oct '09	Angus x Hereford	Bred	
21	509	Oct '09	Angus x Hereford	Bred	
22	609	Oct '09	Angus x Hereford	Bred	
23	9381	Aug '09	Angus x Hereford	Bred	
24	9383	Sep '09	Angus x Hereford	Bred	

Service Sire Information

Sarratts Final Answer 9622 (AAA 16670481)

Production							Maternal							SEN
CED Acc	BW Acc	WW Acc	YW Acc	RADG Acc	YH Acc	SC Acc	Doc Acc	HP Acc	CEM Acc	Milk Acc	MkH MkD	MW Acc	MH Acc	
+8 .29	+1.3 .35	+57 .27	+99 .27			+44 .36			+11 .18	+27 .21				-13.21

Carcass						
CW Acc	Marb Acc	RE Acc	Fat Acc	Carc Grp	Usnd Grp	
				Carc Pg	Usnd Pg	
+29 .21	+77 .24	+31 .26	+056 .22			



You can't *e-mail* a handshake.

Promises to protect your family and property should be made face to face, not computer to computer. That's why our highly-trained local agents are here to serve you in person, not just in your inbox. Call now for a Confidential Insurance Review from your local Farm Bureau Insurance Agent. *Helping you is what we do best.*

Cleveland County Farm Bureau
Shelby Office
 1503 W. Dixon Blvd, Shelby, NC 28152
 (704) 482-2436

An Authorized Agency for
Farm Bureau of North Carolina



Get Real Auto • Home • Life • Health

THIS ADVERTISING CANNOT BE ALTERED, REPRODUCED, RESIZED OR REPAIRED BEYOND CHANGING THE ADVERT PHOTO OR CONTACT INFO. CONTACT MANAGERS WITH ANY QUESTIONS AT COUNTRYSIDE@NCFBINS.COM

Special Thanks...

Cleveland County Cattlemen's Association would like to thank the following for making this sale possible:

Shelby Livestock Yard - Al Eatmon

NC Cooperative Extension - Greg Traywick, Linda Lemons & Krista Smith

NC Cattlemen's Association - Bryan K. Blinson & Casey Hinnant

Mike Clark (Clark Farms)



Mike Clark has been gaining farming experience over the past 11 years, and recently took it upon himself to start his own farming enterprise. Clark Farms raises a mix of Angus and Holsteins for beef.

A first-time consignor at our sale, Mike hopes his farm will continue to grow and make progress. He offers three open commercial Angus females. Born in December, 2010, these well-developed heifers are ready to breed to suit your calving schedule. They are sired by **SAR Expectation 8108 (AAA16165968)**.

Sale Tag	Farm ID	Birth Date	Breed	Palpation Results	Sale Day Weight
25		12-15-10	Commercial Angus	Open	
26		12-18-10	Commercial Angus	Open	
27		12-23-10	Commercial Angus	Open	



Dean Crocker (C-Rock-R Farm)



C-Rock-R Farms has produced purebred Angus cattle for the commercial beef industry since 1985. Their program focuses on customer service, reproductive efficiency and return profits. Their family of bloodlines includes Primrose, Blackcap, Serita, Heiress and Mistress.

This year's quality consignments include a December-born Angus heifer AI bred to SAV Mustang (AAA 16397246) on 01/07/12 and then pasture exposed to TC Payday until 02/21/12.

Also consigned is a young cow with a purebred Angus heifer calf at side. The cow was bred back to Gamble's Bad Medicine (AAA +16738108) on 01/07/12 and later pasture exposed to TC Payday. All are guaranteed free of genetic defects and registration papers can be transferred to the buyer if desired.



Sale Tag	Farm ID	Birth Date	Palpation Results	Sale Day Weight
28	251	12-01-10	Bred	
29 29A	228-Cow 260- Calf	10-01-09 10-09-11	Bred	



Mike Davis (Davis Farm)



Mike Davis has worked with cows most of his life, but only started buying land and building fences six years ago.

He consigns nine (9) purebred (non-registered) commercial Angus heifers out of a good herd he purchased in Morganton.

These heifers were all born in December, 2010 and are in excellent flesh - ready for breeding to suit your program.

Sale Tag	Birth Date	Breed	Palpation Results	Sale Day Weight
30	Dec 2010	Commercial Angus	Open	
31	Dec 2010	Commercial Angus	Open	
32	Dec 2010	Commercial Angus	Open	
33	Dec 2010	Commercial Angus	Open	
34	Dec 2010	Commercial Angus	Open	
35	Dec 2010	Commercial Angus	Open	
36	Dec 2010	Commercial Angus	Open	
37	Dec 2010	Commercial Angus	Open	
38	Dec 2010	Commercial Angus	Open	



West End Sales

110 North Highway 18 • Vale, NC 28168

Massey Ferguson • Kioti • Cub Cadet • Landpride

ExMark • Great Dane • Yazoo • Stihl • Echo

Bob Cat • Bushhog • Taylor-Way

New & Used Farm Equipment • Agco Parts

Fencing Supplies • Ag Sprayers • Utility Trailers

(704) 538-5345

info@westendsales.com

If you're looking for the best brands at the best prices - you've come to the right place!

We offer a wide range of new and used equipment priced to suit your budget. Our sales staff can also assist you with the financing of your purchase.

Hal Hendrick (Plainfield Angus)



Plainfield Angus has established a reputation for breeding quality Angus cattle that excel in terms of functionality, performance, temperament and eye appeal... and the twelve (12) registered heifers consigned to this sale are no exception.

These broody females are very uniform in type and age and

have excellent bloodlines and EPDs. They were all pasture exposed to **Yon New Design W566** from 12/01/11 until 3/01/12.

Papers can be transferred on any of the seven the registered heifers.

Sale Tag	Farm ID	Birth Date	Breed Information	Palpation Results	Sale Day Weight
39	X1	09-16-10	Registered AAA16845448	Bred	
40	X4	09-12-10	Registered AAA16845450	Bred	
41	X5	09-12-10	Registered AAA 16845451	Bred	
42	X8	09-17-10	Registered AAA16845453	Bred	
43	X15	09-22-10	Registered AAA 16845458	Bred	
44	X7	09-17-10	Registered AAA 16845452	Bred	
45	X18	09-29-10	Registered AAA 16845460	Bred	
46	X2	09-08-10	Commercial purebred	Bred	
47	X11	09-19-10	Commercial purebred	Bred	
48	X19	09-29-10	Commercial purebred	Bred	
49	X22	10-09-10	Commercial purebred	Bred	
50	X26	11-01-10	Commercial purebred	Bred	



Plainfield Angus, continued.

Yon New Design W566 (AAA +16526053) has the following EPDs:

Production								Maternal						
CED Acc	BW Acc	WW Acc	YW Acc	RAD G Acc	YH Acc	SC Acc	Doc Acc	HP Acc	CEM Acc	Milk Acc	MkH MkD	MW Acc	MH Acc	\$EN
I+5 .05	I+.7 .05	I+43 .05	I+83 .05	I+.18 .05	I+.6 .05	+.21 .41	I+8 .05	I+9.4 .05	I+8 .05	I+27 .05		I+28 .05	I+.4 .05	-3.09

Carcass					
CW Acc	Marb Acc	RE Acc	Fat Acc	Carc Grp Carc Pg	Usnd Grp Usnd Pg
+14 .25	+.53 .28	+.13 .30	-.005 .27		

\$Values					
\$W	\$F	\$G	\$QG	\$YG	\$B
+31.00	+25.91	+32.04	+26.67	+5.37	+54.76



These Angus females are extremely docile and are loaded with style and genetic potential. They're bred right and are guaranteed safe in calf.

Zack Lowman (R&M Farms, Inc.)

Zack Lowman, a former Catawba County 4-H member and currently a student at North Carolina State University in Raleigh, has been actively involved in the livestock industry for several years.

Zack consigns a purebred Shorthorn heifer to this year's sale.



She is pasture bred to a purebred Angus bull (a son of OAF-878-0470), noted for excellent weaning weight, yearling weight and milk EPDs. This nice October yearling is ready to go to work for you!

Sale Tag	Date of Birth	Date Bred	Service Sire	Sale Day Weight
51	10-31-10	02-06-12	OAF-878-0470	

BOGGS FARM CENTER, INC.

ALL TYPES ANIMAL FEED, CUSTOM MIXING,
MINERALS, & MORE

YOUR TURF & AGRI SUPPLY STORE

BFCFALLSTON@BELLSOUTH.NET



PO Box 660
807 E. STAGECOACH TRAIL
FALLSTON, NC 28042

704-538-7176 FAX 704-538-7641

Robert Rhyne (Rhyneland Farms)



Robert Rhyne has been raising Polled Herefords since 1960 and Limousin since 1986. His farm operation in Mecklenburg and Cabarrus Counties runs around 100 brood cows.

Rhyneland consigns eight (8) open heifers to this year's sale.

They are sired by Wulf's Uproar and a son of Wulf's Wincehster, two exceptional bulls out of Wulf Limousin Farm in Morris, MN.

Sale Tag	Farm ID	Birth Date	Palpation Results	Color & Breed	Sale Day Weight
52	1151B	11-15-10	Open	Black Limousin	
53	1152	11-20-10	Open	Black Limousin	
54	1156	11-21-10	Open	Black Limousin	
55	1158	12-20-10	Open	Black Limousin	
56	1159	03-01-11	Open	Black Limousin	
57	1173	05-15-11	Open	Black Limousin	
58	1176	05-11-11	Open	Red & White Limousin X	
59	1169	11-16-19	Open	Red Limousin	

If you're wanting to add muscle, leanness and growth potential to your herd, then look no further!



These heifers also have calm dispositions.

William E. Seitz, Jr.

William Seitz consigns a nice registered Angus heifer to this year's sale.

Her dam is 7AN 221 Gar Retail Product and she was sired by 7AN 303 New Day 454.

Bred to 7AN 304 Ambush 28 on January 18, 2012, she is safe in calf and will make nice addition to your herd.



Sale Tag	Farm ID	Birth Date	Breed Information	Palpation Results	Sale Day Weight
60	15	10-08-10	Registered Angus	Bred	

Service sire information:

B/R Ambush 28 Reg: AAA #+14188956

Production								Maternal						
CED Acc	BW Acc	WW Acc	YW Acc	RADG Acc	YH Acc	SC Acc	Doc Acc	HP Acc	CEM Acc	Milk Acc	MkH MkD	MW Acc	MH Acc	\$EN
+3	+3.2	+59	+107	+17	+9	-.17	+9	+9.5	+9	+12	85	+61	+1.0	+3.48
.81	.94	.91	.88	.56	.91	.89	.84	.40	.65	.76	310	.59	.62	

Carcass						
CW Acc	Marb Acc	RE Acc	Fat Acc	Carc Grp Carc Pg	Usnd Grp Usnd Pg	
+41	+1.06	+62	-.018	14	758	
.60	.64	.64	.62	20	1785	



Robert Smyre (R&M Farms, Inc.)



R&M Farms consigns three (3) bred heifers to this year's sale. They are sired by **SFS Lead On XU50**, a black polled 1/2 Simmental, 1/2 Angus bull. They were artificially bred to **Werner War Party 2417** (a registered Angus bull) on 12/26/11. These quality commercial heifers are safe in calf and sell individually.

Sale Tag	Farm ID	Birth Date	Palpation Results	Sale Day Weight
61	420	12-20-10	Bred	
62	428	01-15-11	Bred	
63	435	02-01-11	Bred	

Sire Information:

	CE	Brth	Wean	Year	MCE	Milk	MWW
EPD	9.0	-1.3	29.9	68.7	10.8	7.4	22.4
Acc	0.35	0.35	0.31	0.30	0.27	0.26	0.26

	Doc	CW	YG	Marb	BF	REA	Shr
EPD	10.0	2.2	-0.01	0.52	0.00	0.06	-0.25
Acc	0.09	0.26	0.18	0.19	0.19	0.19	0.04

SFS Lead On XU50 (ASA #: 2483248) - Spring 2012 EPDs

Service Sire Information:

Werner War Party 2417 (AAA +16004857)

Production								Maternal						
CED Acc	BW Acc	WW Acc	YW Acc	RADG Acc	YH Acc	SC Acc	Doc Acc	HP Acc	CEM Acc	Milk Acc	MkH MkD	MW Acc	MH Acc	SEN
+9	+1.7	+67	+127	+0.09	+4	+99	+20		+8	+31		+12	+3	-18.98
.74	.89	.83	.71	.43	.76	.74	.60		.21	.25		.39	.30	



EAGLE ROLLER MILL CO.



CLEVELAND FEED

SINCE 1923

1101 Airport Road • Shelby, NC 28150

Eagle Roller Mill has been proudly serving the Carolinas for more than 85 years. We manufacture a full line of Cleveland Feeds to meet all your horse, poultry and livestock needs. We also offer a complete line of pet foods, pet supplies, and animal health supplies.

Call 1-800-223-9108 to find a dealer near you.

Products you know. People you trust

EDDIE HAMRICK, General Manager
Cell: 704-472-4378

HAMRICK-O'SHIELDS EQUIPMENT

New & Used Equipment, Parts & Service

332 North Main Street
 Boiling Springs, NC 28017



JOHN DEERE

Phone: (704) 434-2226

Fax: (704) 434-6830

Email: boshields2@carolina.rr.com

Hours of Operation:
 Mon-Fri 8am - 5:30pm
 Saturday 8am - 12pm
 Sunday Closed



The 2012
 5M Series Tractors
 Quality In. Quality Out.
 0.0% New John
 Deere 5M Series
 Utility and 5 Series
 Specialty Tractors
 - 65 to 105 hp

[LEARN MORE](#)

Joyce & T.W. Wall (Highlands Farm)



These four yearling heifers were picked from the heart of the Highlands Farm herd by our sale screening committee.

They are purebred Angus females selling as commercial. Farm tags 116, 117 & 118 are sired by a son of **Traveler 004** and farm tag 11 is sired by a son of **On Target**.

Sale Tag	Farm ID	Birth Date	Breed Information	Palpation Results	Sale Day Weight
64	118	12-01-10	Purebred Commercial Angus	Open	
65	116	12-15-10	Purebred Commercial Angus	Open	
66	117	12-16-10	Purebred Commercial Angus	Open	
67	11	01-02-11	Purebred Commercial Angus	Open	



David White (White Farm)



White Farm has produced quality Angus seedstock since 2000, and also now sell all-natural grain fed beef to consumers at the Gastonia Farmers' Market. In addition to growth and maternal traits, David breeds his cattle to yield a high-value, high-quality carcass.

He offers four (4) bred heifers at this year's sale. Three are purebred Angus (selling without papers) and the fourth is a commercial Piedmontese x Angus cross female. All have been pasture exposed to an Angus son of Bando bull since 11/4/11.

Sale Tag	Farm ID	Birth Date	Palpation Results	Sale Day Weight
68	WF1	10-24-10		
69	WF2	09-15-10		
70	WF3	09-18-10		
71	WF4	09-25-10		



Elmore's Feed & Seed, Inc.

121 Carpenter's Grove Church Rd, Lawndale, NC 28090
704-538-3166

**NEW • CONVENIENT • EFFECTIVE
FLY CONTROL**

Horn flies can cause big problems for cattle and cattle producers. Published reports put their economic impact at over \$875 million per year. Stop the fly cycle now! **The Feed in a Drum Fescue Balancer IGR, N-20 IGR and MinLic IGR** supplements, fortified with Altosid®, offer the most effective and convenient way to control horn flies in beef and dairy cattle. When fed properly these supplements provide enough insect growth regulating (IGR) methoprene to prevent the emergence of adult horn flies. Take control of your fly problems, feed **The Feed in a Drum IGR** supplements.

- University Research Proven to Control Horn Flies
- Contains Insect Growth Regulating (IGR) Methoprene
- Self-fed, Safe & Convenient
- Weather Resistant Low Moisture Block



THE FEED in a DRUM

Authorized Dealer
THE FEED in a DRUM

HYDRABED
BY TRIPLE C, INC.



Round and Square Bale Handling and Feeding

Elmore's Feed & Seed, Inc.

Our Thanks...

Palpation & veterinary services provided by:

Bert Parker, DVM
South Ridge Veterinary Hospital
1920 S Ridge Avenue
Kannapolis, NC 28083
www.southridgevets.com
(704) 933-1414

CattleMaster® Gold FP5L5 and Ultrabac 7 boosters provided by:

Pfizer Animal Health
Noel Torres, Area Representative - Huntersville, NC
noel.torres@pfizer.com
Cell: 980-253-3224

Sale advertising provided by:

NC Cattlemen's Association
Bryan K. Blinson, Executive Director
2228 North Main Street
Fuquay-Varina, NC 27526
(919) 552-9111

The Shelby Shopper
Greg Ledford, Managing Editor
503 N. Lafayette Street
Shelby NC 28150
704-484-1047
advertising@shelbyinfo.com

PARKER FARM SERVICE



126 BESSIE DR, KINGS MOUNTAIN, NC / 704-259-6100
"ACROSS FROM YOUNG'S RV ON HWY 74"

Proud to support the local beef industry...

Parker Farm Service is a full service agricultural, consumer and landscape dealership located between Shelby and Kings Mountain at the Oak Grove Road exit on Hwy 74. We are an authorized dealer for Grasshopper, Kubota, New Holland, Toro, Bush Hog, Woods, Stihl, Alamo, Kuhn & Red Max.

In addition to providing new and used tractors, lawn mowers, and skid steers sales, we also offer a wide selection of parts, and have a dedicated service department team with over a 100 years of combined experience.

Visit us online at www.tractorsusa.com, contact us via email or call us toll free at (888) 428-7902 today, and let us help you find the equipment that is right for you!



Have You Herd?

FINANCING AVAILABLE FOR:

- Farms
- Equipment
- Barns, stables and outbuildings
- Livestock
- Home purchases or construction
- Small or large tracts of land
- Home and lot improvements
- Mortgage refinancing
- Recreation or investment property

We're a lot easier to work with than some old bull.

Whether your interest is farming full or part time, building or buying a home, planning your retirement, or owning your own country retreat where you can hunt, fish or just relax, we know where to begin.

Farm Credit has been financing dreams for more than 90 years. From home improvements to equipment loans, construction or refinancing, we can finance everything you need for your lifestyle.

Call us. We're the experts.



704.482.6321

WWW.CAROLINAFARMCREDIT.COM
1216 FALLSTON ROAD, SHELBY, NC

Loans for homes, land, & living.



Visit us on the web: more information, rates, an online application, & view 1000's of property listings!